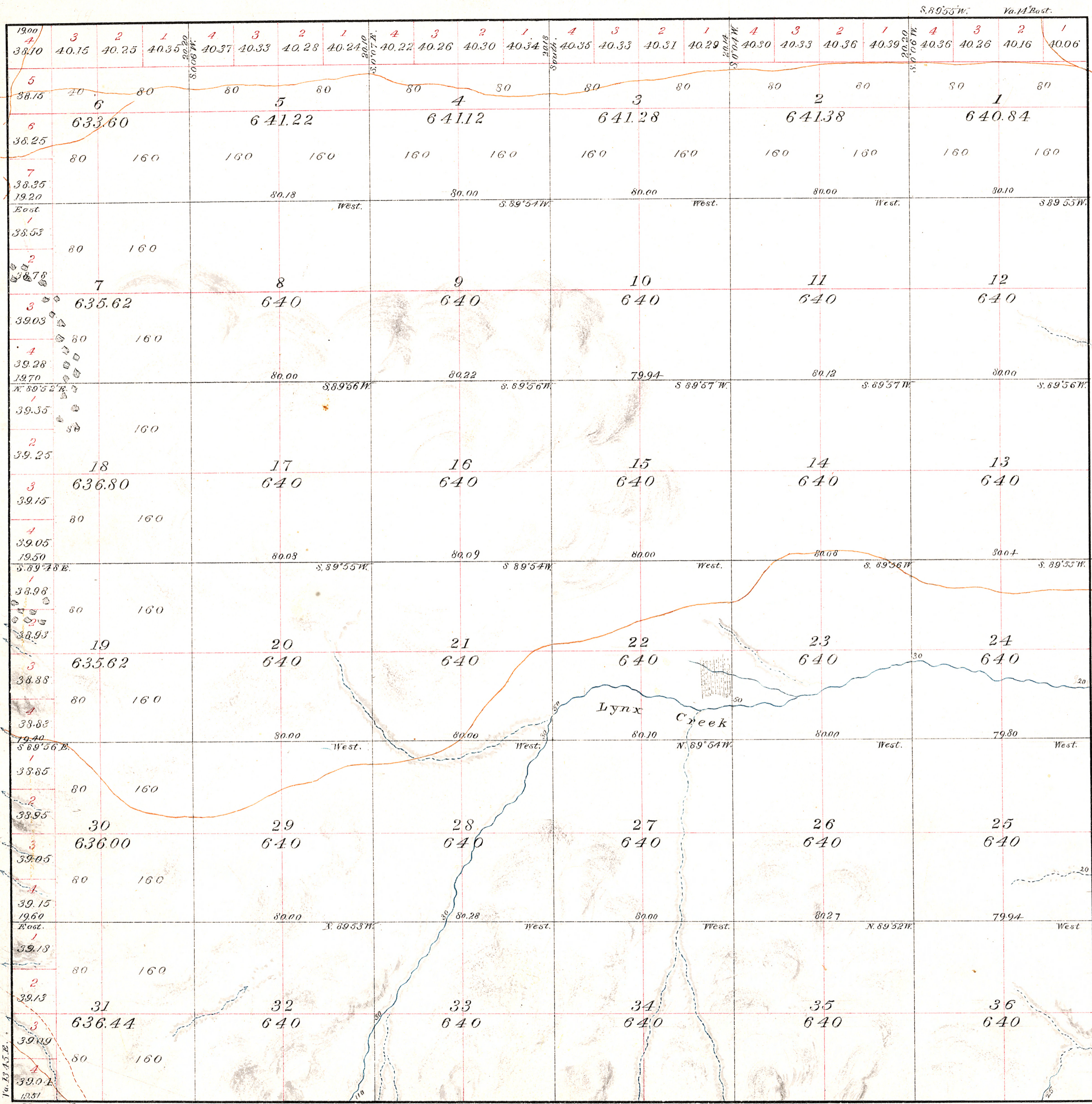


OFFICIALLY FILED 10-24-1871



Amount of Public lands surveyed 23,019.92 acres

Subdivision lines run at a Variation of 13' 15" East.

Surveys Designated	By Whom Surveyed	Date of Contract	Amount of Surveys	When Surveyed
Township lines	A. H. Foreman	May 29, 1871	23 Tms. 78 Cts. 51 Lks.	Aug. 3-11, 1871
Subdivisions	do.	do.	59 " 79 " 46 "	Aug. 31 - Sept. 7, "

The Above Map of Township No. 14 North of Range No. 1 West of the Gila and Salt River Meridian is strictly conformable to the field notes of the survey thereof on file in this Office, which have been examined and approved.

Surveyor General's Office
 Tucson, Arizona, October 20, 1871

John Massie
 Sur. Gen.