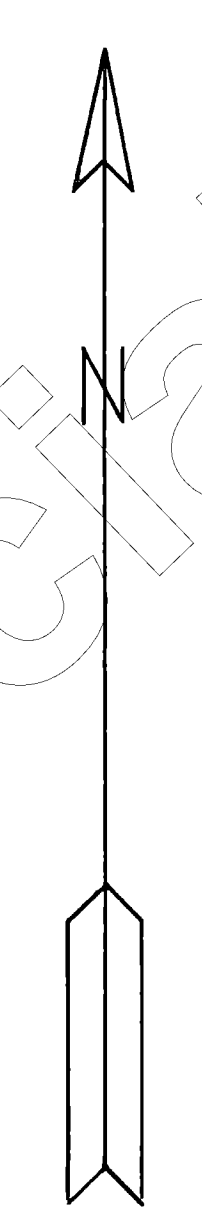
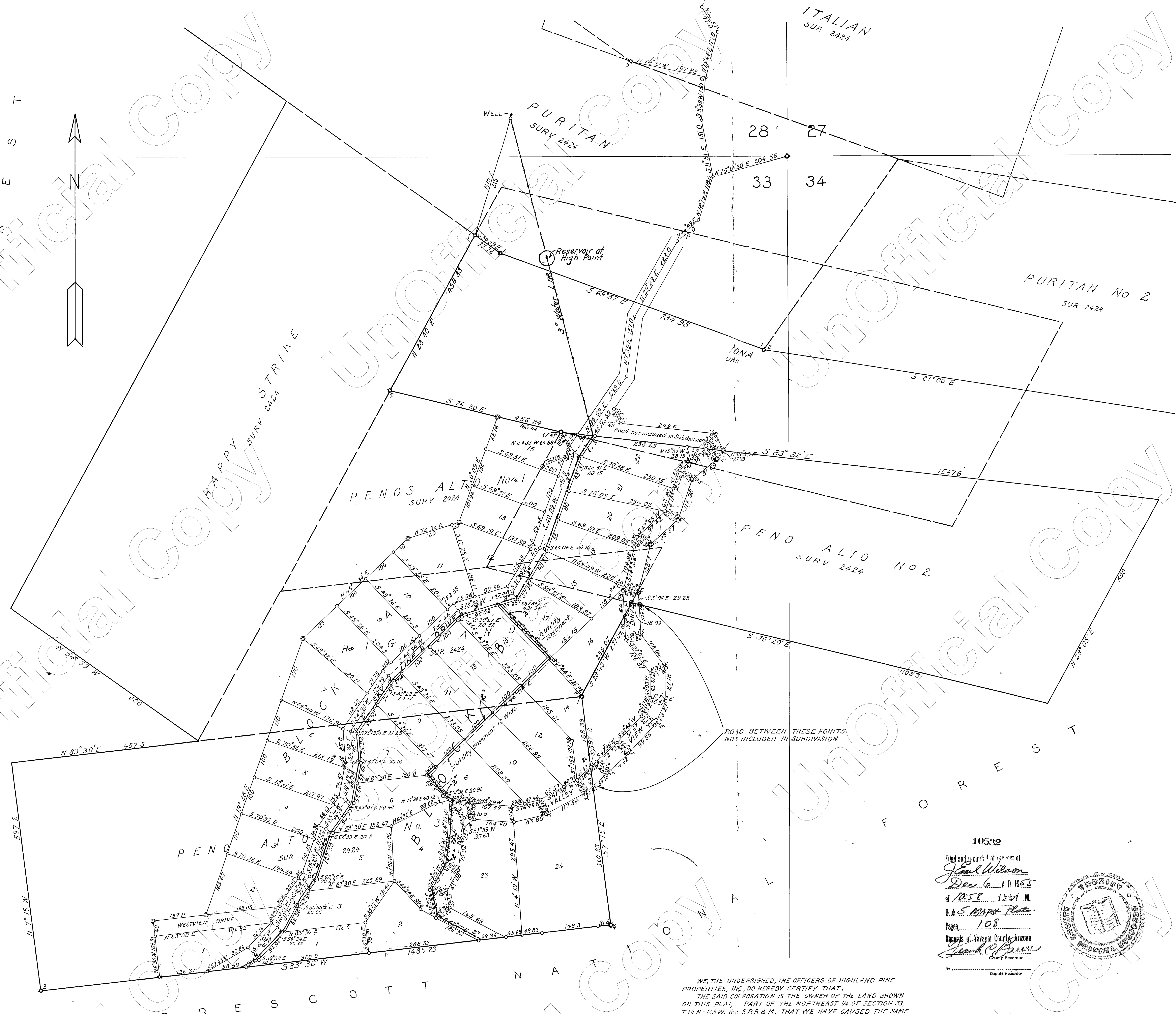


N  
E  
S  
T



P  
R  
E  
S  
C  
O  
T  
T

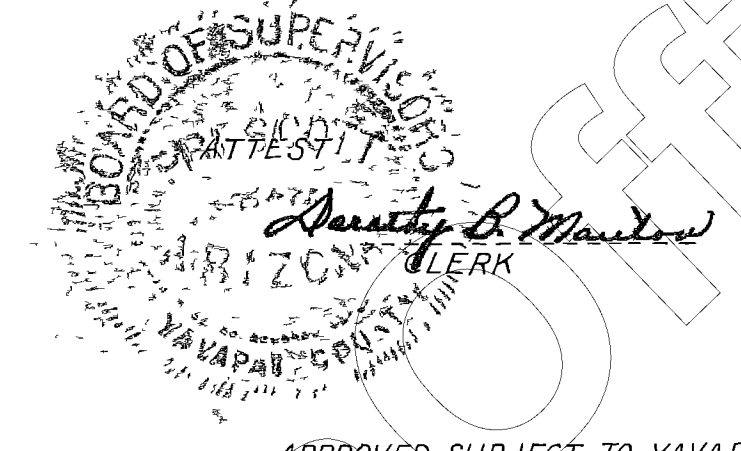


WE, THE UNDERSIGNED, THE OFFICERS OF HIGHLAND PINE PROPERTIES, INC, DO HEREBY CERTIFY THAT THE SAID CORPORATION IS THE OWNER OF THE LAND SHOWN ON THIS PLAT, PART OF THE NORTHEAST 1/4 OF SECTION 33, T14N-R3W, G & L SR & M, THAT WE HAVE CAUSED THE SAME TO BE SURVEYED AND PLATTED INTO LOTS AND STREETS, AND THAT THE SIZE OF LOTS AND THE WIDTH OF STREETS ARE ACCURATELY Delineated HEREON THIS SUBDIVISION SHALL BE KNOWN AS PLAT A, HIGHLAND PINE PROPERTIES, AND WE HEREBY DEDICATE TO THE PUBLIC FOR ITS GENERAL USE THE STREETS SHOWN ON THIS PLAT, AND THE EASEMENTS TO THE USE SHOWN HEREON

10532  
Filed and recorded at request of  
*J. Earl Wilson*  
Dec 6 A D 1955  
at 10:58 a.m. of Dec 6, 1955  
Book 5 MAPS Plate  
Page 108  
Records of Yavapai County, Arizona  
*Frank C. Brown*  
County Recorder  
Deputy Recorder

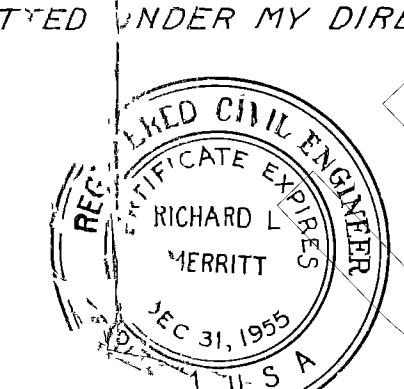
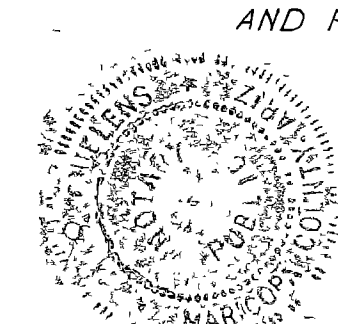


APPROVED BY THE BOARD OF SUPERVISORS OF YAVAPAI COUNTY, ARIZONA, THIS SIXTH DAY OF DECEMBER, 1955  
*M. E. Rohrer*  
CHAIRMAN  
*R. L. Merritt*  
COUNTY ENGINEER



APPROVED SUBJECT TO YAVAPAI COUNTY SANITARY STANDARDS AND REGULATIONS  
*Ralph A. Archu*  
COUNTY HEALTH DEPARTMENT SANITARIAN

STATE OF ARIZONA  
COUNTY OF MARICOPA  
THIS INSTRUMENT WAS ACKNOWLEDGED BEFORE ME THIS 15 DAY OF DECEMBER, 1955 BY J. EARL WILSON, AS PRES. & WILLIAM A. BARNETT, AS SECY, OF HIGHLAND PINE PROPERTIES, INC  
*M. O. Chelmsford*  
NOTARY PUBLIC  
July 9, 1957



*J. Earl Wilson*  
PRESIDENT  
*William A. Barnett*  
SECRETARY



*R. L. Merritt*  
REGISTERED ENGINEER

PLAT A  
HIGHLAND PINE PROPERTIES  
YAVAPAI COUNTY-ARIZONA  
PART OF THE NORTHEAST 1/4 SEC 33-T14N-R3W  
SCALE 1"=100  
OFFICIAL CORNER FOUND  
IRON PIN  
SUBDIVISION CORNER  
OCTOBER 1955