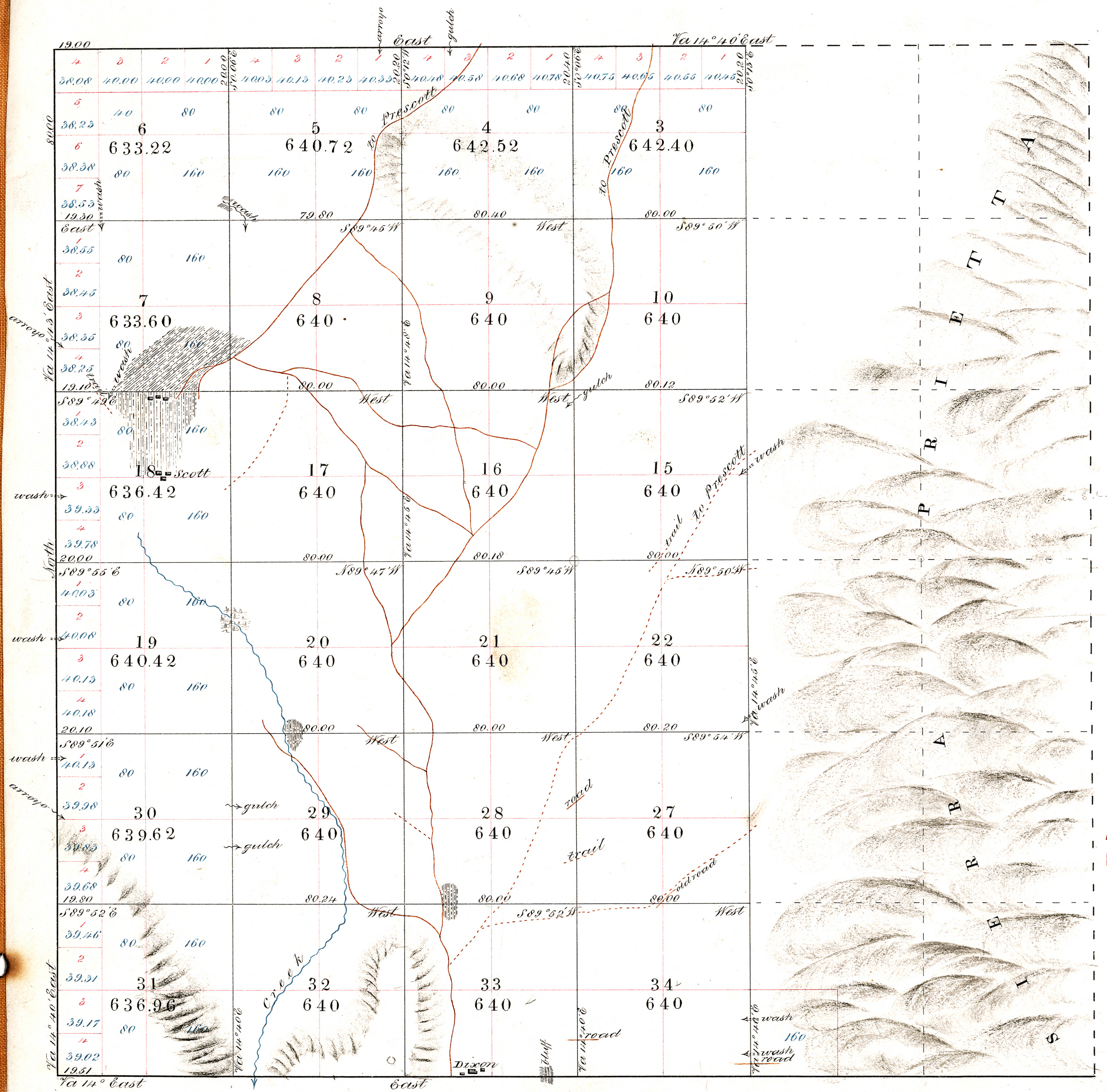


OFFICIALLY FILED 7-8-1875



Aggregate Area of Public Land Surveyed 15,505.88A.
 Estimated Area of Public Land Unsurveyed 7,520.00"
 Total 23,025.88"

Surveys Designated.	By whom Surveyed	Date of Contract	Amount of Surveys	When Surveyed
Township Lines	S. W. Forman	May 29 th 1871	5 N 79 chs 51 lks	August 1 st 1871
Subdivisions	C. H. Foster	Oct ^r 29 th 1874	9 " 79 " 00 "	Dec ^r 30-31-1874
	do.	do.	44 " 00 " 04 "	Jan ^y 2-8-1875

The above Map of Township N^o 14 North of Range N^o 4 West of the Gila and Salt River Meridian and Base line is strictly conformable to the field notes of the survey thereof on file in this Office, which have been examined and approved
 Surveyor General's Office
 Tucson A. T. June 19th 1875

John Masson
 Sur^g Gen^l