

Claim Located December 11, 1890.

Mineral Survey No 2950

ARIZONA Land District

# PLAT

OF THE CLAIM OF  
**GOLD STAR MINING CO.**  
KNOWN AS THE

## GOLD STAR

IN Copper Basin MINING DISTRICT,  
YAVAPAI COUNTY, Arizona

Containing an Area of 20.661 Acres.  
Scale of 200 Feet to the inch.

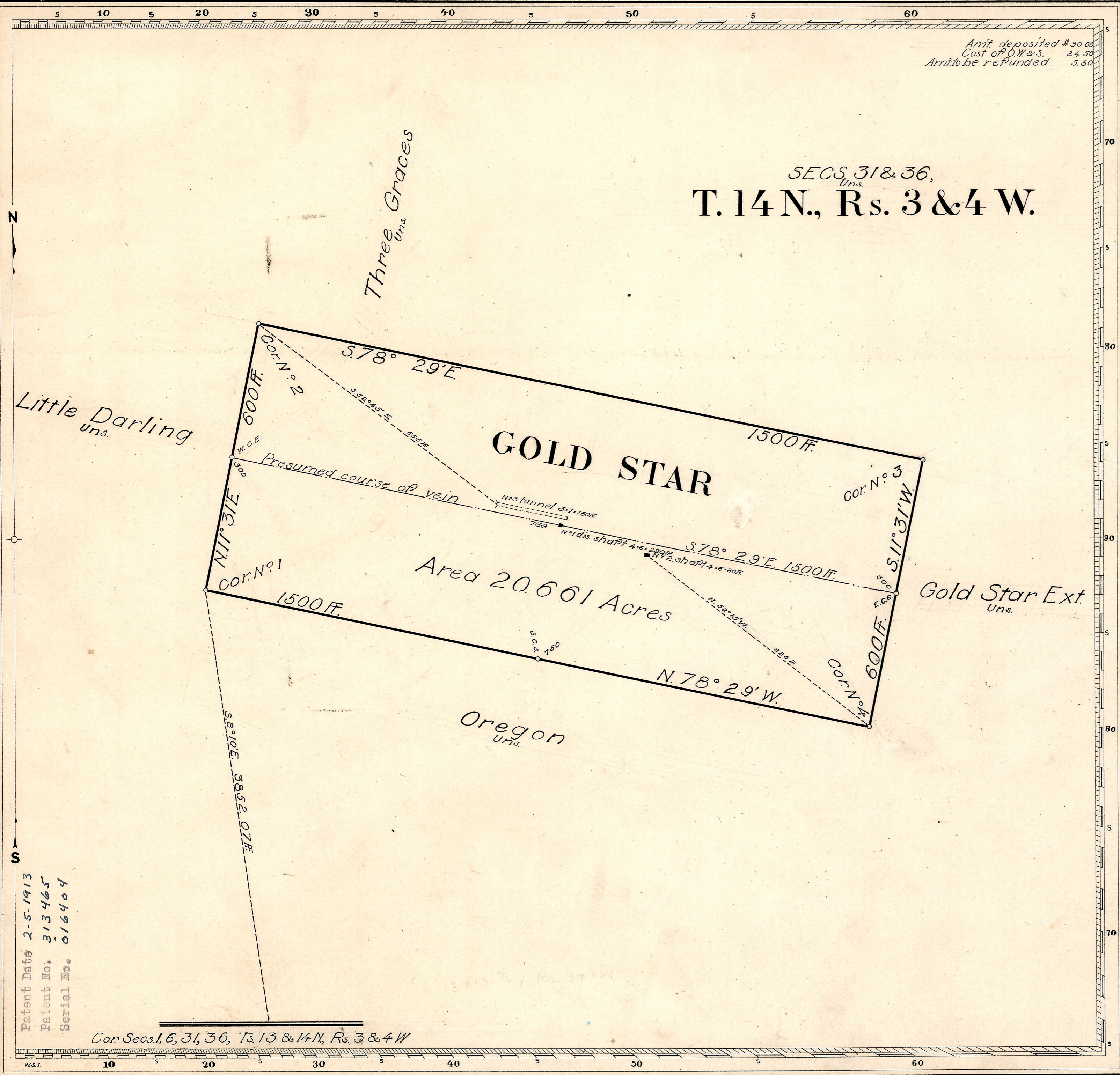
Variation 14° E.  
SURVEYED Sept. 30 - Oct 2, 1911 BY  
William H. Merritt  
U.S. Mineral Surveyor,

The Original Field Notes of the Survey of the Mining Claim of  
Gold Star Mining Co.  
known as the  
Gold Star

from which this plat has been made under my direction,  
have been examined and approved, and are on file in this Office;  
and I hereby certify that they furnish such an accurate descrip-  
tion of said Mining Claim as will, if incorporated into a patent,  
serve fully to identify the premises, and that such references  
is made therein to natural objects or permanent monuments  
as will perpetuate and fix the locus thereof.  
I further certify that Five Hundred Dollars worth of labor has  
been expended or improvements made upon said Mining  
Claim by claimant or its grantors, and that  
said improvements consist of 2 shafts and 1  
tunnel, total value \$4820.00

that the location of said improvements is correctly shown  
upon this plat, and that no portion of said labor or im-  
provements has been included in the estimate of expendi-  
tures upon any other claim.  
And I further certify that this is a correct plat of said Mining  
Claim made in conformity with said original field notes of the  
survey thereof, and the same is hereby approved.

U.S. Surveyor General's Office. *Frank S. Ingalls*  
Phoenix, Arizona } U.S. Surveyor General for  
November 23, 1911. **ARIZONA.**



Patent Date 2-5-1913  
Patent No. 313465  
Serial No. 616404

Cor. Secs. 1, 6, 31, 36, T. 13 & 14 N., R. 3 & 4 W.