

Lot No. Land District.

PLAT

OF THE CLAIM OF

KNOWN AS THE

IN MINING DISTRICT,
COUNTY,

Containing an Area of Acres.

Scale of 350 Feet to the inch.

Variation 15° E.

SURVEYED 19 BY

U.S. Deputy Mineral Surveyor,

The Original Field Notes of the Survey of the Mining Claim of

known as the

from which this plat has been made under my direction, have been examined and approved, and are on file in this Office, and I hereby certify that they furnish such an accurate description of said Mining Claim as will, if incorporated into a patent, serve fully to identify the premises, and that such reference is made therein to natural objects or permanent monuments as will perpetuate and fix the locus thereof.

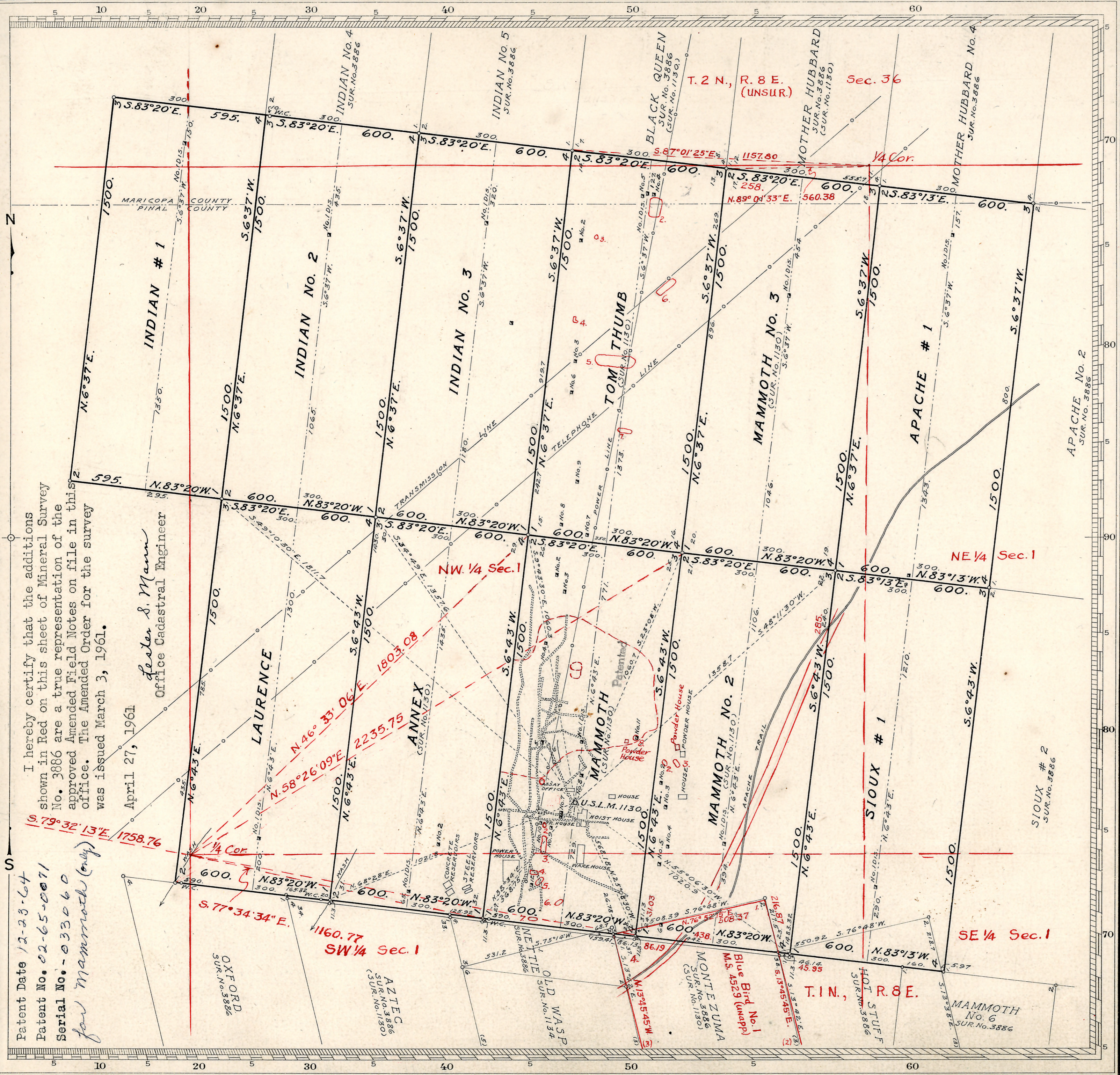
I further certify that Five Hundred Dollars worth of labor has been expended or improvements made upon said Mining Claim by claimant or grantors and that said improvements consist of

that the location of said improvements is correctly shown upon this plat, and that no portion of said labor or improvements has been included in the estimate of expenditures upon any other claim.

And I further certify that this is a correct plat of said Mining Claim made in conformity with said original field notes of the survey thereof, and the same is hereby approved.

U.S. Surveyor General's Office.

Charles W. Dowd
U.S. Surveyor General for



I hereby certify that the additions shown in Red on this sheet of Mineral Survey No. 3886 are a true representation of the approved Amended Field Notes on file in this office. The Amended Order for the survey was issued March 3, 1961.

April 27, 1961
Lester S. Mann
Office Cadastral Engineer

Patent Date 12-23-64
Patent No. 02-65-0071
Serial No. - 033060
for Mammoth (only)